

# Delock Barcode Scanner Module 1D and 2D - German Version

## Description

This barcode scanner module by Delock can be used for installation in any housing.

### Small but powerful

The module convinces with a size of 21 x 14 x 9 mm. **All common 1D and 2D barcode** types can be precisely captured even at long distances. Additionally, the scanner recognizes barcodes displayed on displays and monitors.

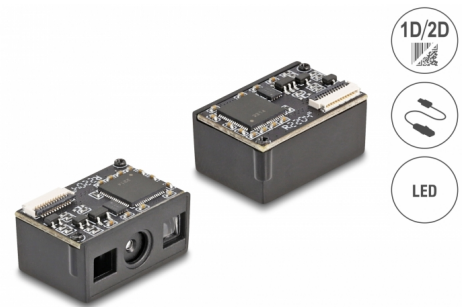
### Automatic adaptation to ambient brightness

The scanner automatically adapts to the ambient brightness and captures up to **30 scans per second** under optimal lighting conditions.

In low ambient brightness, the barcode is illuminated by an **additional white LED** and can therefore also be used in poor lighting conditions.

## Note

This module is intended exclusively for the output of the German keyboard.



21 x 14 x 9 mm

**Item no. 90603**

EAN: 4043619906031

Country of origin: China

Package: White Box

## Technical details

- Connector: 1 x FPC 12 pin female
- Decoding chip: ARM Cortex 32 Bit
- Resolution: max. 640 x 480
- Reading distance: ca. 30 mm to 350 mm
- Reading accuracy: 4 mil
- Light colour: visible LED red
- Compensation light: LED white
- Sensor: CMOS image sensor
- Scan rate: up to 30 scans per second
- Scan angle: 44°

- Surrounding brightness: max. 100000 Lux
- Input voltage: 3.3 V
- Current consumption:
  - operation: max. 110 mA
  - standby: max. 60 mA
- Operating temperature: -20 °C ~ 60 °C
- Storage temperature: -40 °C ~ 80 °C
- Relative humidity: 0 - 95 % (non condensing)
- Colour: black
- Weight: ca. 2 g
- Dimensions (LxWxH): ca. 21 x 14 x 9 mm
- Scancodes:
  - Code 128
  - Code 39
  - Interleaved 2 of 5
  - EAN-8 / EAN-13
  - ISBN - 13
  - Data Matrix
  - PDF417
  - QR Code

---

## System requirements

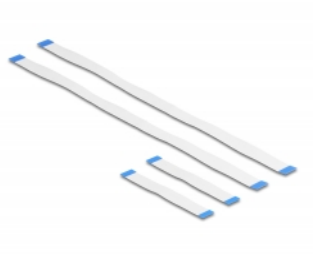
- Android 11.0 or above
- iPad Pro (2018)
- Linux Kernel 5.15 or above
- Mac OS 12.4 or above
- Windows 8.1/8.1-64/10/10-64/11

---

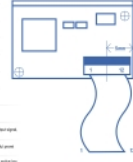
## Package content

- Barcode scanner module
- 2 x FPC 12 pin flat ribbon cable, length ca. 6 cm
- 2 x FPC 12 pin flat ribbon cable, length ca. 20 cm
- User manual

## Images



Pin	Pin input/output	Define	Description
FR1	-	NC	
FR2	Power	VCC	Input +3.3V
FR3	GND	GND	-
FR4	Input	RX	receive
FR5	Output	TX	send
FR6	Input	D-	USB D-
FR7	Output	D+	USB D+
FR8	-	NC	
FR9	Output	BEEP/ER	Alarmfunktion (nicht aktiviert)
FR10	Output	DL/ED	Druckfunktion (nicht aktiviert)
FR11	Input	RESET	Reset (nicht aktiviert, muss über einen Pull-up Widerstand verbunden sein)
FR12	Input	TRIG	Trigger (nicht aktiviert, muss über einen Pull-up Widerstand verbunden sein)



### Technical characteristics

Operating voltage:	3.3 V
Operating temperature:	-20 °C ~ 60 °C
Current consumption:	Betrieb: max. 110mA Standby: max. 60mA
Resolution:	640 x 480
Scan rate:	30 Scans pro Sekunde
Reading distance:	30 mm - 350 mm
Sensor:	CMOS Bildsensor
Scancodes:	EAN-8 EAN-13 Interleaved 2 of 5 Standard Code 39 Code 128 PDF417 DataMatrix QR Code ISBN - 13
Surrounding brightness:	100000 Lux

### Physical characteristics

Weight:	2 g
Length:	21.0 mm
Height:	9.0 mm
Colour:	black