

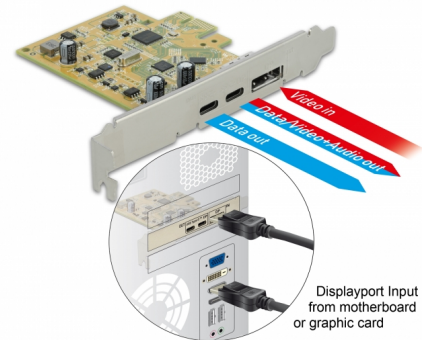
# Delock PCI Express x1 Card to 1 x external USB Type-C™ 10 Gbps female + 1 x external USB Type-C™ 10 Gbps (DP Alt Mode) female

## Description

This PCI Express card by Delock expands the PC by **two external USB-C™ ports**. Different USB-C™ devices, such as docking stations, card readers, external enclosure etc., can be connected to the card.

## Video output at USB-C™ port

By using the included cable, the DisplayPort connector of the PCI Express card can be connected to a DisplayPort output of a graphics card on the motherboard. Therefore one **USB-C™ port will be DP Alt Mode** capable. A monitor can be connected to this port in order to transmit video and audio signals. The maximum resolution of the output depends on the input signal.



**Item no. 89582**

EAN: 4043619895823

Country of origin: China

Package: Retail Box

## Technical details

- Connectors:
  - external:
    - 1 x USB 10 Gbps USB Type-C™ female
    - 1 x USB 10 Gbps USB Type-C™ female (DP Alt Mode capable)
    - 1 x DisplayPort female (for DP Alt Mode function)
  - internal:
    - 1 x PCI Express x1, V3.0
- Chipset: Asmedia ASM1142
- Data transfer rate up to 10 Gbps
- Resolution up to 7680 x 4320 @ 30 Hz (depending on the system and the connected hardware)
- Power supply via PCI Express interface
- Electrical power per port: max. 7.5 watt (5 V / 1.5 A)
- Supports eXtensible Host Controller Interface (xHCI) specification 1.1

## System requirements

- Linux Kernel 4.4 or above
- Windows 7/7-64/8.1/8.1-64/10/10-64
- PC with one free PCI Express slot
- Graphics card with DisplayPort output (to support DP Alt Mode)

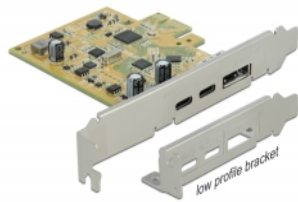
---

## Package content

- PCI Express card
- DisplayPort cable
- Low profile bracket
- Driver CD
- User manual

---

## Images



## General

Specification:	eXtensible Host Controller Interface (xHCI) 1.1 DisplayPort 1.2
Supported operating system:	Linux Kernel 4.4 or above Windows 10 32-Bit Windows 10 64-Bit Windows 7 32-Bit Windows 7 64-Bit Windows 8.1 32-Bit Windows 8.1 64-Bit

## Interface

External:	1 x DisplayPort 20 pin female (for DP Alt Mode function) 2 x USB 10 Gbps USB Type-C™ female
Internal:	1 x PCI Express x1, V3.0

## Technical characteristics

Chipset:	Asmedia ASM1142
Data transfer rate:	SuperSpeed USB 10 Gbps