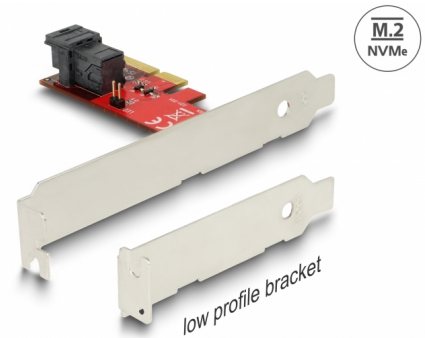


Delock PCI Express x4 Card > 1 x internal SFF-8643 NVMe - Low Profile Form Factor

Description

This PCI Express card by Delock expands the PC by one SFF-8643 interface. It can be connected to e.g. one SSD with U.2 interface by using an optional cable.



Item no. 89535

EAN: 4043619895359

Country of origin: Taiwan,
Republic of China

Package: Retail Box

Technical details

- Connectors:
 - 1 x 36 pin SFF-8643 female
 - 1 x PCI Express x4, V4.0
 - 1 x 2 pin LED pin header male
- Data transfer rate up to 64 Gbps
- Supports NVM Express (NVMe)

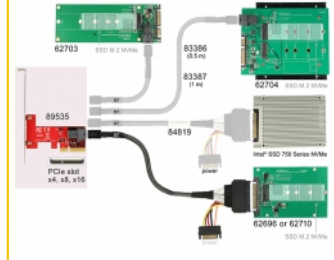
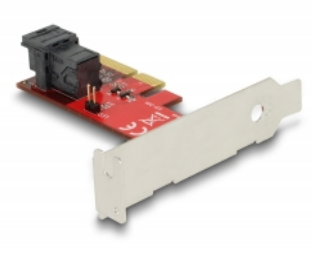
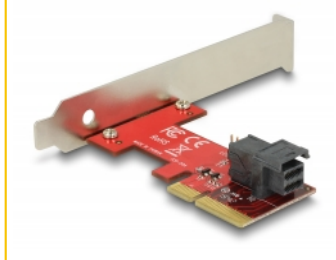
System requirements

- Linux Kernel 3.6 or above
- Windows 7/7-64/8.1/8.1-64/10/10-64/11
- PC with one free PCI Express x4 / x8 / x16 / x32 slot

Package content

- PCI Express card
- Low profile bracket
- User manual

Images



General

Function:	NVM Express (NVMe)
Supported operating system:	Linux Kernel 3.16 or above Windows 10 32-Bit Windows 10 64-Bit Windows 7 32-Bit Windows 7 64-Bit Windows 8.1 32-Bit Windows 8.1 64-Bit

Interface

Internal:	1 x 2 pin LED pin header male 1 x 36 pin SFF-8643 female 1 x PCI Express x4, V4.0
-----------	---

Technical characteristics

Data transfer rate:	up to 64 Gbps
---------------------	---------------

Physical characteristics

Slot bracket:	Low Profile standard
---------------	-------------------------