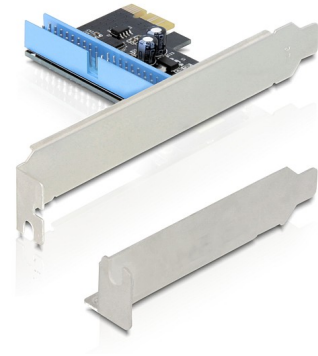


Delock PCI Express > 1 x IDE

Description

The Delock controller card can be plugged internally to the PCI Express slot. You can connect IDE devices like hard disk, CD-ROM drives etc. to the controller card.



Item no. 89149

EAN: 4043619891498

Country of origin: China

Package: Blister

Technical details

- 1 x internal PATA specification
- PCI Express x1 standard
- Supports PCI Express 1.0a specification
- Supports up to 2 HDDs on the IDE controller
- Supports up to UDMA6
- Supports PIO mode 0, 1, 2, 3, 4
- Supports 48-bit LBA mode
- Bootable

System requirements

- Windows XP/XP-64/Server-2003/Vista/7, Linux ex Kernel 2.6
- PC with one free PCI Express slot

Package content

- PCI Express card
- Low profile bracket

- User manual

Images

