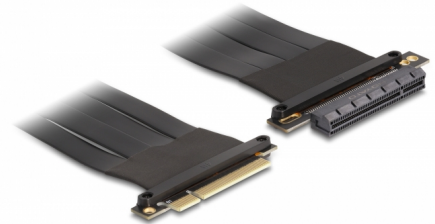


# Delock Riser Card PCI Express x8 male to x8 slot with cable 60 cm

## Description

This PCI Express riser card by Delock is used to connect a PCI Express x8 card. The flexible cable allows a space-saving installation inside the computer case.



60 cm

**Item no. 88030**

EAN: 4043619880300

Country of origin: Taiwan,  
Republic of China

Package: Box

## Technical details

- Connectors:
  - 1 x PCI Express x8 male
  - 1 x PCI Express x8 slot
- Supports PCI Express 3.0 protocol
- Cable gauge: 28 AWG
- Colour: black
- OS independent, no driver installation necessary
- Cable length: ca. 60 cm

## System requirements

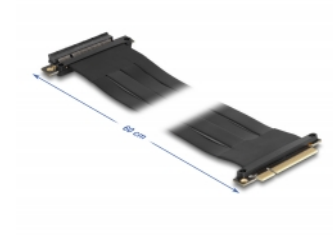
- PC with one free PCI Express x8 / x16 / x32 slot

## Package content

- PCIe riser card
- User manual

---

## Images



## General

Specification:	PCI Express 3.0
Style:	Flat cable

## Interface

Connector 1:	1 x PCI Express x8 male
Connector 2:	1 x PCI Express x8 slot

## Physical characteristics

Cable length:	60 cm
Colour:	black