

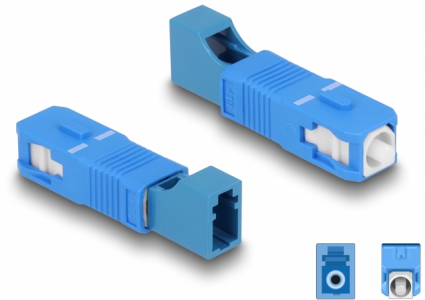
# Delock Optical Fiber Hybrid Coupler SC Simplex male to LC Simplex female blue

## Description

This SC Simplex to LC Simplex hybrid coupling by Delock enables the conversion from one connector type to the other. This means that SC and LC optical fiber cables can be easily connected to each other.

### Protection by dust cover

The coupling is equipped with an appropriate cap to protect the sleeve from dust and to keep it clean.



**Item no. 87941**

EAN: 4043619879410

Country of origin: China

Package: Zip poly bag

## Technical details

- Connectors:
  - 1 x SC Simplex male
  - 1 x LC Simplex female
- Insertion loss < 0.3 dB
- Return loss > 50 dB
- Ceramic sleeve
- With dust cover
- Operating temperature: -40 °C ~ 75 °C
- Colour: blue
- Material: plastic
- Dimensions (LxWxH): ca. 45.9 x 9.5 x 8.9 mm

## System requirements

- A free SC Simplex female port
- A free LC Simplex male port

---

## Package content

- Optic fiber coupler

---

## Images



### Interface

Connector 1:	1 x SC Simplex male
Connector 2:	1 x LC Simplex male

### Technical characteristics

Operating temperature:	-40 °C ~ 75 °C
------------------------	----------------

### Physical characteristics

Material:	Plastic
Length:	45.9 mm
Width:	9.5 mm
Height:	8.9 mm
Colour:	blue