

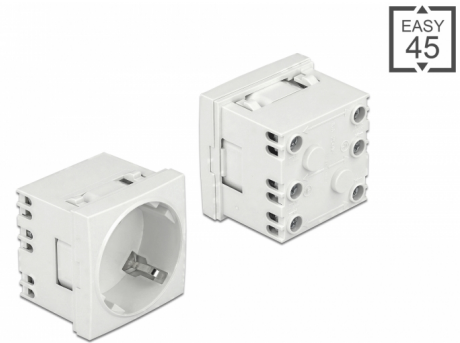
Delock Easy 45 Grounded Power Socket with a 45° arrangement extendable 45 x 45 mm

Description

This power socket by Delock is designed to provide a CEE 7/3 power connection. The simple snap-in mechanism ensures that the module is firmly in place and can be easily removed if necessary.

Individually extendable

With the help of the optionally available accessories, the socket can be extended by further slots.



Item no. 81425

EAN: 4043619814251

Country of origin: China

Package: Zip poly bag

Technical details

- Connectors:
 - 1 x socket CEE 7/3
 - 3 x screw terminal for PE, N, L
- Rated current: 16 A / 250 V~
- Rated power: 4000 W
- Sockets in a 45° arrangement
- Material: ABS / PC plastic
- Suitable for module holder Delock Easy 45
- Suitable for 45 mm cable duct with minimum depth 45 mm
- Module size: 45 x 45 mm
- Dimensions (LxWxH): ca. 45 x 45 x 40 mm
- Colour: white

System requirements

- Mains supply with grounding
- A free module port Delock Easy 45 (45 x 45 mm)

Package content

- 1 x Power socket
- User manual

Images



Interface

Connector 1:	1 x 3 pin terminal block screw terminal
Connector 2:	1 x Steckdose CEE 7/3 mit Kindersicherung

Physical characteristics

Length:	45 mm
Width:	45 mm
Height:	40 mm
Colour:	RAL 9003 Weiß