

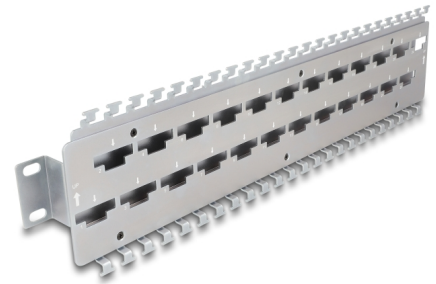
# Delock 19" Cable support rail for network cable connectors with LSA connection 24 port metal

## Description

This panel by Delock can be mounted into a 19" cabinet or can be used for wall mounting.

### Optimal cable management

Up to 24 cable connectors can be attached to the panel. The twisted pair cables are connected to each other and fixed to the strip with cable ties. This enables tidy and organised cable routing and ensures excellent strain relief for the cables.



**Item no. 67070**

EAN: 4043619670703

Country of origin: China

Package: Box

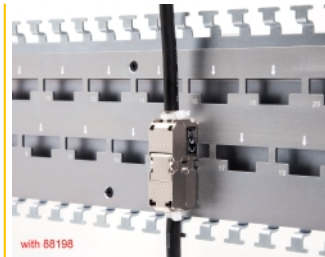
## Technical details

- For mounting in 19" network cabinet, 1U
- Wall mounting
- 24 cable routings
- Tidy routing of cables
- Excellent strain relief with cable ties
- Material: metal
- Dimensions (LxWxH): ca. 482.6 x 111.0 x 37.5 mm

## Package content

- 19" cable routing panel
- Ground wire
- 9 x screws
- 4 x cable tie 4.6 x 200 mm
- 24 x cable tie 2.4 x 100 mm

## Images



## General

Mounting type:	19 in
----------------	-------

## Physical characteristics

Material:	metal
Length:	482.6 mm
Width:	111.0 mm
Height:	37.5 mm