

Delock RJ45 Cat.6A built-in connector / coupler black

Description

This coupler by Delock can be **used to connect a network cable** to an **RJ45 connector** and is ideal to **use in a switch cabinet or distribution box**. In addition, the **Delock sealing cap 67050** can be used as an optional accessory to protect the connector from damage and moisture when not in use.



Note

Optional connection plug item number: 67049.

Item no. 67048

EAN: 4043619670482

Country of origin: China

Package: Poly bag

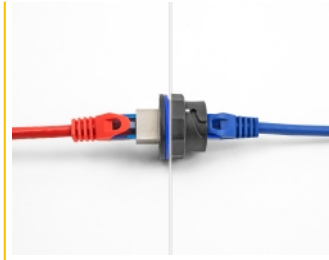
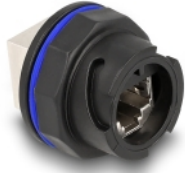
Technical details

- Connectors:
2 x RJ45 jack
- Cat.6A specification
- Built-in hole Ø: 27.4 mm
- Shielded (STP)
- Silicone sealing ring blue
- For solid or stranded wire (26 - 22 AWG)
- Operating temperature: -10 °C ~ 60 °C
- Material: plastic
- Colour: black
- Dimensions (LxWxH): ca. 43 x 31 x 31 mm

Package content

- Built-in connector

Images



General

| | |
|-------------------------------|-------------|
| Suitable for conductor gauge: | 26 - 22 AWG |
| Specification: | Cat. 6A |

Interface

| | |
|--------------|---------------|
| Connector 1: | 1 x RJ45 jack |
| Connector 2: | 1 x RJ45 jack |

Technical characteristics

| | |
|------------------------|----------------|
| Operating temperature: | -10 °C ~ 60 °C |
|------------------------|----------------|

Physical characteristics

| | |
|------------|---------|
| Material: | Plastic |
| Shielding: | STP |
| Length: | 43 mm |
| Width: | 31 mm |
| Height: | 31 mm |
| Colour: | black |