

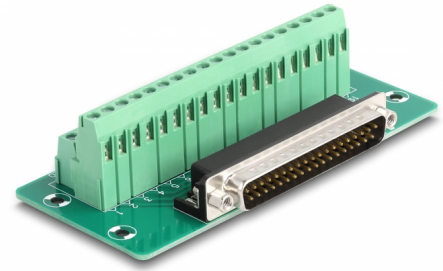
# Delock D-Sub 37 pin male to Terminal Block for DIN rail

## Description

This terminal block adapter by Delock can be used to connect wires with stripped ends.

### DIN rail mounting

With the clips included in the delivery content, the adapter can be attached to a 15 mm or 35 mm wide DIN rail.



**Item no. 66913**

EAN: 4043619669134

Country of origin: China

Package: White Box

## Technical details

- Connectors:
  - 1 x D-Sub 37 pin male
  - 1 x 38 pin terminal block
- Pin assignment: 1:1
- Pitch: 5.00 mm
- Useable for a cable gauge from 24 to 12 AWG
- DIN rail mounting: 15 mm and 35 mm
- Operating temperature: -40 °C ~ 100 °C
- Dimensions (LxWxH): ca. 116 x 51 x 30 mm

## System requirements

- A free D-Sub 37 pin female
- 15 mm or 35 mm DIN rail

## Package content

- Adapter
- 2 x DIN rail clip
- 5 x screws

## Images



### General

Mounting type:	DIN rail mounting: 15 mm and 35 mm
----------------	------------------------------------

### Interface

Connector 1:	1 x D-Sub 37 pin male
Connector 2:	1 x 38 pin terminal block

### Technical characteristics

Operating temperature:	-40 °C ~ 100 °C
------------------------	-----------------

### Physical characteristics

Pitch distance:	5.00 mm
Conductor gauge:	24 to 12 AWG
Length:	116 mm
Width:	51 mm
Height:	30 mm