

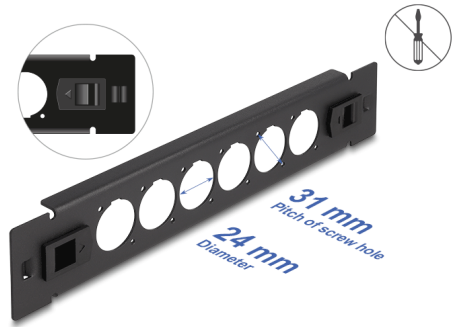
Delock 10" D-Type Patch Panel 6 port tool free black

Description

This patch panel by Delock can be mounted in a 10" rack. With its standardized dimensions, it is suitable for easy mounting of 6 D-type modules.

Installation without tools

The special feature of this patch panel is that no tools are required for installation in a network cabinet. The integrated mounting clips can simply be pushed outwards to lock the panel in place.



Item no. 66899

EAN: 4043619668991

Country of origin: China

Package: Box

Technical details

- 6 D-type ports 24 x 19 mm
- For mounting in 10" racks, 1U
- Material: metal
- Colour: black
- Dimensions (LxWxH): ca. 254.0 x 44.4 x 12.5 mm

Package content

- D-type patch panel

Images



General

Mounting type:	10 in
----------------	-------

Physical characteristics

Material:	metal
Length:	254 mm
Width:	44.5 mm
Height:	12.5 mm
Colour:	black