

Delock Thermostat with normally open contact for DIN rail

Description

This thermostat by Delock can be used to control filter fans, heat exchangers or to switch signal devices when the temperature is exceeded. The contact closes when the temperature rises. Due to the integrated clips on the back, it can be mounted on a 35 mm DIN rail in a control cabinet.



Item no. 66823

EAN: 4043619668236

Country of origin: China

Package: Box

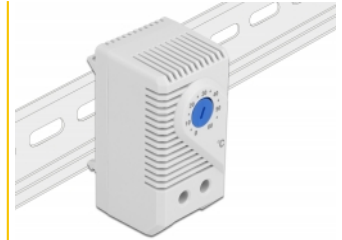
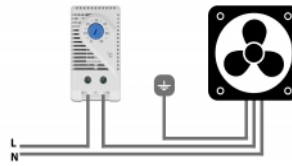
Technical details

- Connector: 2 pin terminal for 2.5 mm²
- Switching function: normally open contact
- Switching capacity: max. AC 250 V, 10 (2) A / 120 VAC, 15 (2) A DC 30 W
- Switching temperature difference: 7 K (±4 K tolerance)
- Temperature setting range: 0 °C ~ 60 °C
- Sensor: thermobimetal
- DIN rail mounting: 35 mm
- Protection class: IP20
- Lifetime: > 100.000 cycles
- Fire-resistance rating: 94V-0
- Operating temperature: -45 °C ~ 80 °C
- Colour:
 - housing: grey
 - temperature regulator: blue
- Housing material: plastic
- Dimensions (LxWxH): ca. 60 x 43 x 33 mm

Package content

- Thermostat
- User manual

Images



General

Mounting type:	DIN rail 35 mm
----------------	----------------

Interface

connector:	2 pin terminal for 2.5 mm ²
------------	--

Technical characteristics

Operating temperature:	-45 °C ~ 80 °C
------------------------	----------------

Physical characteristics

Housing colour:	grey
Housing material:	Plastic
Length:	60 mm
Width:	43 mm
Height:	33 mm