

# Delock D-Sub15 male to Terminal Block with Enclosure

## Description

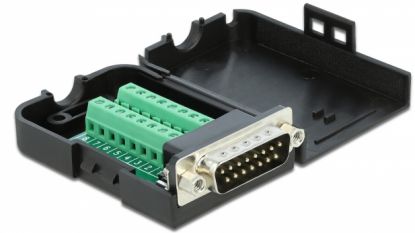
This terminal block adapter by Delock can be used to connect bare wires. Thus the adapter is not only convenient for special industry applications, but also for the hobby area, e.g. railway modelling.

### Protection by enclosure

The plastic enclosure protects the PCB from dirt and damage.

### Strain relief

The screw-on strain relief fixes the cable in the enclosure.



**Item no. 66568**

EAN: 4043619665686

Country of origin: Taiwan,  
Republic of China

Package: Zip poly bag

## Technical details

- Connectors:
  - 1 x serial D-Sub15 male (2 rows) with nuts
  - 1 x 16 pin terminal block
- Pin assignment: 1:1
- Pitch: 3.81 mm
- Useable for a cable gauge from 26 to 18 AWG
- Operating temperature: -20 °C ~ 105 °C
- Dimensions (LxWxH): ca. 71 x 42 x 21 mm

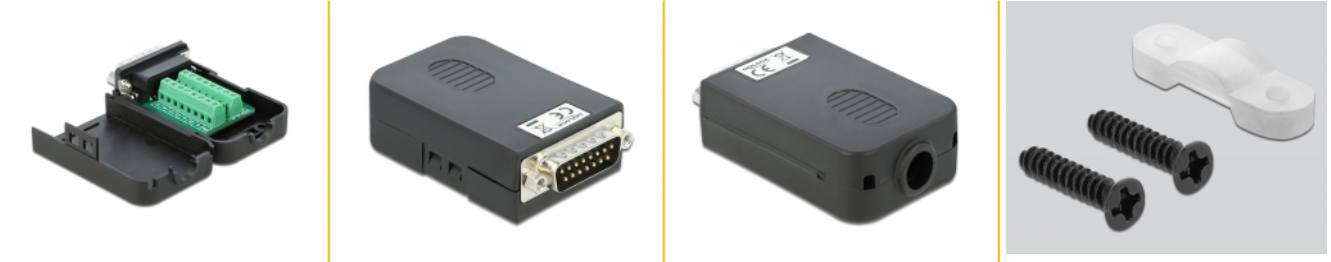
## System requirements

- A free D-Sub15 female

## Package content

- Adapter
- 1 x strain relief
- 2 x locking screws

## Images



### Interface

|              |                           |
|--------------|---------------------------|
| Connector 1: | 1 x serial Sub-D15 male   |
| Connector 2: | 1 x 16 pin terminal block |

### Technical characteristics

|                        |                 |
|------------------------|-----------------|
| Operating temperature: | -20 °C ~ 105 °C |
|------------------------|-----------------|

### Physical characteristics

|                  |             |
|------------------|-------------|
| Pitch distance:  | 3.81 mm     |
| Conductor gauge: | 26 - 18 AWG |
| Length:          | 78 mm       |
| Width:           | 42 mm       |
| Height:          | 21 mm       |