

# Delock USB Type-C™ Docking Station for 1 x U.2 SSD

## Description

This Docking Station by Delock enables an external connection of one **U.2 SSD** through the USB interface.

## Supports SuperSpeed USB 10 Gbps

A maximum data transfer rate of up to **USB 3.2 Gen 2 - 10 Gbps** can be reached.

## Good cooling

The bottom consists of a **stable metal plate with cooling fins**. These provide a passive cooling for the inserted memory.



**Item no. 63368**

EAN: 4043619633685

Country of origin: China

Package: Retail Box

## Technical details

- Connectors:
  - 1 x SuperSpeed USB 10 Gbps (USB 3.2 Gen 2) USB Type-C™ female
  - 1 x U.2 SFF-8639 female
  - 1 x DC jack
- Chipset: Asmedia ASM2362
- Function key: 1 x On / Off switch
- Data transfer rate up to 10 Gbps
- LED indicator for power and access
- Supports S.M.A.R.T.
- Supports TRIM
- Supports UASP
- Plug & Play
- Bootable
- Colour: black
- Dimensions (LxWxH): ca. 138 x 80 x 23 mm

## Power supply specification

- Wall power supply

- Input: AC 100 ~ 240 V / 50 ~ 60 Hz / 1.5 A
  - Output: 12.0 V / 3.0 A
  - Ground outside, plus inside
  - Dimensions:
    - inside:  $\varnothing$  ca. 2.1 mm
    - outside:  $\varnothing$  ca. 5.5 mm
    - length: ca. 10 mm
- 

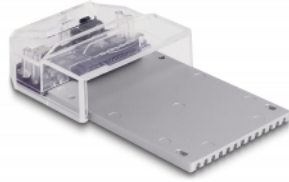
## System requirements

- Android 10.0 or above
  - Chrome OS
  - Linux Kernel 5.11 or above
  - Mac OS 11.2.3 or above
  - Windows 8.1/8.1-64/10/10-64/11
  - iPad Air (4th Generation) or above
  - iPad Pro (3rd Generation) or above
  - Surface Pro 7
  - PC or laptop with a free USB Type-A port or
  - Device with a free USB Type-C™ port or with a free Thunderbolt™ 3 port
- 

## Package content

- Docking station
- Cable USB-C™ male to USB-C™ male, length ca. 80 cm
- Cable USB-C™ male to USB Type-A male, length ca. 80 cm
- External power supply 12.0 V / 3.0 A
- Screws
- User manual

## Images



## General

Function:	Plug & Play bootable TRIM S.M.A.R.T.
Suitable for data medium:	2.5"
Supported operating system:	Chrome OS Surface Pro 7 Windows 10 32-Bit Windows 10 64-Bit Windows 8.1 32-Bit Windows 8.1 64-Bit Android 10.0 or above iPad Pro (3rd Generation) or above iPad Air (4th Generation) or above Mac OS 11.2.3 or above Windows 11 Linux Kernel 5.11 or above

## Interface

External:	1 x DC jack 5.5 x 2.1 mm 1 x USB 10 Gbps USB Type-C™ female
Internal:	1 x U.2 SFF-8639 female

## Technical characteristics

Chipset:	Asmedia ASM2362
Data transfer rate:	10 Gbps

## Physical characteristics

Length:	138 mm
Width:	80 mm
Height:	23 mm