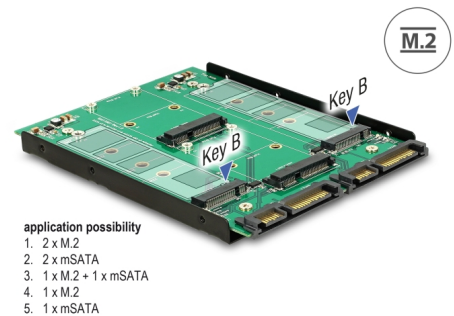


# Delock 3.5" Converter 2 x SATA 22 pin > Dualport 2 x M.2 / 2 x mSATA

## Description

This Delock converter enables the usage of up to two SSDs simultaneously. It can be used to connect M.2 SSDs in 2280, 2260, 2242 and 2230 format and mSATA SSDs in full size and half size format. The converter can be installed into the system through the SATA interfaces.



**Item no. 62946**

EAN: 4043619629466

Country of origin: Taiwan,  
Republic of China

Package: Retail Box

## Technical details

- Connectors:
  - 2 x SATA 6 Gb/s 22 pin plug >
  - 2 x 67 pin M.2 key M slot
  - 2 x mSATA slot (half size / full size)
- Interface: SATA
- Supports M.2 modules in format 2280, 2260, 2242 and 2230 with key B or key B+M based on SATA
- Maximum height of the components on the module: 1.35 mm, application of double-sided assembled modules supported
- Data transfer rate up to 6 Gb/s
- Maximum power for modules: 3 A
- Short circuit protection, over heating protection
- ESD protection up to 2 kV
- Bootable
- LED indicator
- Dimensions (LxWxH): ca. 132 x 102 x 10 mm

---

## System requirements

- Windows 7/7-64/8.1/8.1-64/10/10-64, Linux ex Kernel 3.17.x / Kernel 4.x.x
- Two free SATA 22 pin interfaces

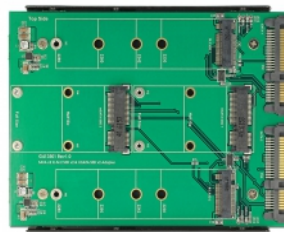
---

## Package content

- 3.5" Converter SATA > M.2 / mSATA
- Mounting material
- User manual

---

## Images



## General

Form factor:	3.5"
Function:	bootable
Supported operating system:	Linux Kernel 3.17 or above Linux Kernel 4.x or above Windows 10 32-Bit Windows 10 64-Bit Windows 7 32-Bit Windows 7 64-Bit Windows 8.1 32-Bit Windows 8.1 64-Bit
Slot:	SATA
Supported module:	M.2 modules in format 2280, 2260, 2242 and 2230 with key B or key B+M based on SATA
Maximum height of the components on the module:	1.35 mm application of double-sided assembled modules supported
Protection:	ESD (Electrostatic Discharge) Short circuit protection Overheating protection

## Interface

Connector 1:	2 x SATA 6 Gb/s 22 pin plug
Connector 2:	2 x 67 pin M.2 key B slot
connector 3:	2 x mSATA slot (half size / full size)

## Physical characteristics

Length:	132 mm
Width:	102 mm
Height:	10 mm