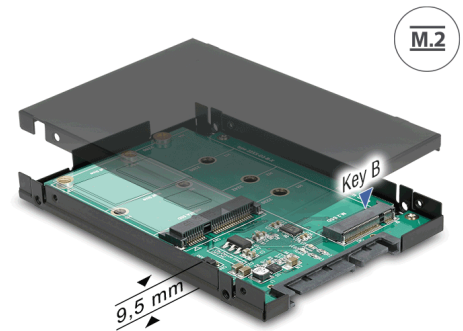


Delock 2.5" Converter SATA 22 pin > 1 x M.2 key B + 1 x mSATA - 9.5 mm

Description

This converter by Delock enables the connection of an M.2 SATA SSD in 2280, 2260, 2242 and 2230 format or an mSATA module in half size or full size format. If both slots are occupied, only the M.2 SSD can be used. The converter can be installed into the system through the SATA 22 pin interface.



Item no. 62866

EAN: 4043619628667

Country of origin: Taiwan,
Republic of China

Package: Retail Box

Technical details

- Connectors:
 - 1 x SATA 6 Gb/s 22 pin plug >
 - 1 x 67 pin M.2 key B slot
 - 1 x mSATA slot (half size / full size)
- Interface: SATA
- Form factor: 2.5"
- Supports M.2 modules in format 2280, 2260, 2242 and 2230 with key B or key B+M based on SATA
- Maximum height of the components on the module: 1.35 mm, application of double-sided assembled modules supported
- LED indicator
- Maximum power for modules: 3 A
- Short circuit protection, over heating protection
- ESD protection up to 2 kV
- Dimensions (LxWxH): ca. 100 x 70 x 9.5 mm

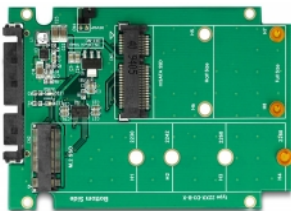
System requirements

- Linux Kernel 3.20 or above
- Windows 7/7-64/8.1/8.1-64/10/10-64/11
- A free SATA 22 pin interface

Package content

- Converter with 2.5" enclosure
- Mounting material
- User manual

Images



General

| | |
|---|---|
| Form factor: | 2.5" |
| Supported operating system: | Linux Kernel 3.2 or above Windows 10 32-Bit Windows 10 64-Bit Windows 7 32-Bit Windows 7 64-Bit Windows 8.1 32-Bit Windows 8.1 64-Bit |
| Slot: | SATA |
| Supported module: | M.2 modules in format 2280, 2260, 2242 and 2230 with key B or key B+M based on SATA |
| Maximum height of the components on the module: | 1.35 mm application of double-sided assembled modules supported |
| Protection: | ESD (Electrostatic Discharge) Short circuit protection Overheating protection |

Interface

| | |
|--------------|--|
| Connector 1: | 1 x SATA 6 Gb/s 22 pin plug |
| Connector 2: | 1 x 67 pin M.2 key B slot |
| connector 3: | 1 x mSATA slot (half size / full size) |

Physical characteristics

| | |
|---------|--------|
| Length: | 100 mm |
| Width: | 70 mm |
| Height: | 9.5 mm |