

# Delock Slim SATA 5.25" Installation Frame (13 mm) for 1 x M.2 SSD Key B / 1 x mSATA SSD

## Description

**M.2**

This Delock installation frame in slim-format can be installed into a 5.25" SATA slim bay in order to operate a M.2 SSD or an mSATA SSD. If both slots are occupied, only the M.2 SSD can be used.



**Item no. 62718**

EAN: 4043619627189

Country of origin: China

Package: Retail Box

## Technical details

- Connector:
  - 1 x 67 Pin M.2 key B slot
  - 1 x mSATA slot (half size / full size)
  - 1 x Slim SATA 13 pin female
- For the installation into a slim 5.25" bay
- Interface: SATA
- Supports M.2 modules in format 2280, 2260 and 2242 with key B or key B+M based on SATA
- Maximum height of the components on the module: 1.5 mm application of double-sided assembled modules supported
- Data transfer rate up to 6 Gb/s
- Dimensions (LxWxH): ca. 128 x 128 x 13 mm
- OS independent, no driver installation necessary

## System requirements

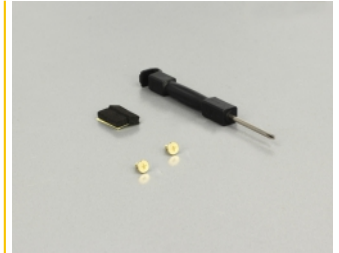
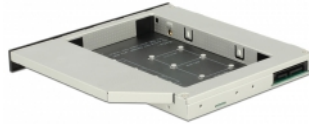
- A free slim SATA 5.25" bay

## Package content

- Slim SATA 5.25" installation frame

- Screwdriver
- Spacer

## Images



## General

Form factor:	Slim 5.25"
Supported operating system:	OS independent, no driver installation necessary
Slot:	SATA
Supported module:	mSATA full size / half size M.2 modules in format 2280, 2260, 2242 and 2230 with key B or key B+M based on SATA
Maximum height of the components on the module:	1.5 mm application of double-sided assembled modules supported

## Interface

Connector 1:	1 x Slim SATA 13 pin receptacle
Connector 2:	1 x 67 pin M.2 key B slot
connector 3:	1 x mSATA slot (half size / full size)

## Technical characteristics

Data transfer rate:	6 Gb/s
---------------------	--------

## Physical characteristics

Length:	128 mm
Width:	128 mm
Height:	13 mm