

Delock Mobile Rack PCI Express Card for 1 x M.2 NVMe SSD - Low Profile Form Factor

Description

This mobile rack by Delock can be installed into a free PC slot of the computer and provides an **M.2 slot** in 2280, 2260, 2242 or 2230 format.

Quick change of SSD

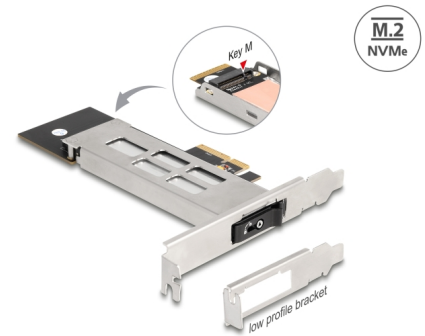
Due to the special mechanism, the SSD can be **exchanged quickly and easily**. For example, data backups can be taken and stored in a safe place.

Tray with key lock and springs

The mobile rack is equipped with a **key lock** to prevent unauthorised access. The stable carrier of metal has **springs** on the top and bottom which reduce vibrations.

Note

Special care must be taken that the tray is fully inserted, otherwise no connection to the SSD can be established.



Item no. 47028

EAN: 4043619470280

Country of origin: China

Package: Box

Technical details

- Connectors:
 - PCIe card:
 - 1 x PCI Express x4, V4.0
 - 1 x M.2 key M slot
 - M.2 tray:
 - 1 x M.2 key M male
 - 1 x M.2 key M slot
- Interface: PCIe / NVMe
- Supports M.2 modules in format 2280, 2260, 2242 and 2230 with key M or key B+M based on PCIe
- Maximum height of the components on the module: 1.5 mm, application of double-sided assembled modules supported
- 1 x LED indicator
- Bootable, ex UEFI version 2.3.1

- M.2 tray made of metal
 - Supports NVM Express (NVMe)
 - Supports S.M.A.R.T.
 - Operating temperature: -40 °C ~ 85 °C
-

System requirements

- Linux Kernel 5.15 or above
 - Windows 10/10-64/11
 - Windows Server 2022
 - PC with one free PCI Express x4 / x8 / x16 / x32 slot
-

Package content

- Mobile Rack
- M.2 tray
- Low profile bracket
- Heat sink
- Screws
- 2 x keys
- User manual

Images



General

Form factor:	Low Profile
Function:	Bootable, ex UEFI 2.3.1
Supported operating system:	Windows 10 32-Bit Windows 10 64-Bit Windows 11 Linux Kernel 5.15 or above Windows Server 2022
LED indicator:	1 x
Supported module:	M.2 modules in format 2280, 2260, 2242 and 2230 with key M or key B+M based on PCIe
Maximum height of the components on the module:	1.5 mm application of double-sided assembled modules supported

Interface

Internal:	1 x PCI Express x4, V4.0 1 x M.2 key M slot
-----------	--