

Delock Keystone Desktop Patch Panel 12 Port black

Description

This patch panel by Delock can be used as a junction box on the wall or in enclosures. Additionally, clips for DIN rail mounting are included. With its standardized dimensions, it is suitable for easy snap-in mounting of twelve Keystone modules.



Note

Due to the narrow design only keystone modules up to max. 17.2 mm width can be used.

Item no. 43339

EAN: 4043619433391

Country of origin: China

Package: Box

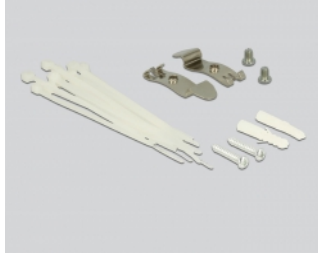
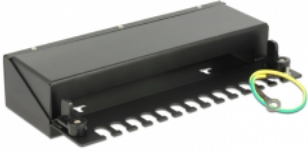
Technical details

- 12 Keystone ports 19.2 x 14.9 mm
- Cable routing 180°
- Shielded
- Metal housing
- Colour: jet black RAL 9005
- Dimensions (WxHxD): ca. 221 x 44,5 x 112,5 mm

Package content

- Keystone Patch Panel
- 2 x DIN-rail clips
- 2 x screws M5
- 12 x cable ties
- 2 x screws
- 2 x dowel

Images



General

Mounting type:	wall DIN rail
----------------	------------------

Physical characteristics

Housing colour:	black
Housing material:	metal
Depth:	112.5 mm
Width:	221 mm
Height:	44.5 mm