

Delock External Enclosure SuperSpeed USB for M.2 SATA SSD Key B

Description

The aluminium enclosure by Delock enables the installation of a **M.2 SSD in 2280, 2260, 2242 and 2230 format**, which can be connected via USB to the PC or laptop.



Item no. 42007

EAN: 4043619420070

Country of origin: China

Package: Retail Box

Technical details

- Connectors:
external: 1 x SuperSpeed USB 10 Gbps (USB 3.2 Gen 2) Type Micro-B female
internal: 1 x 67 pin M.2 key B slot
- Chipset: Asmedia ASM235CM
- Supports M.2 modules in format 2280, 2260, 2242 and 2230 with key B or key B+M based on SATA
- Maximum height of the components on the module: 1.35 mm, application of double-sided assembled modules supported
- Data transfer rate up to 6 Gbps
- LED indicator for power and access
- Dimensions (LxWxH): ca. 98 x 39 x 9 mm
- Hot Plug, Plug & Play

System requirements

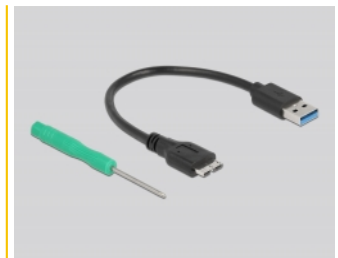
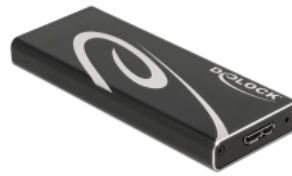
- Chrome OS
- Linux Kernel 5.8 or above

- Mac OS 11.2.3 or above
- Windows 8.1/8.1-64/10/10-64
- PC or laptop with a free USB Type-A port

Package content

- External enclosure M.2
- Screwdriver, screws
- Cable USB 3.2 Type-A to Type Micro-B, length ca. 20 cm
- User manual

Images



General

Function:	Hot Plug Plug & Play
Supported operating system:	Chrome OS Linux Kernel 5.8.0 or above Windows 10 32-Bit Windows 10 64-Bit Windows 8.1 32-Bit Windows 8.1 64-Bit Mac OS 11.2.3 or above
Supported module:	M.2 modules in format 2280, 2260, 2242 and 2230 with key B or key B+M based on SATA
Maximum height of the components on the module:	1.35 mm application of double-sided assembled modules supported

Interface

External:	1 x USB 10 Gbps Type Micro-B female
Internal:	1 x 67 pin M.2 key B slot

Technical characteristics

Chipset:	Asmedia ASM235CM
Data transfer rate:	6 Gb/s

Physical characteristics

Housing material:	Aluminium
Cable length:	20 cm
Length:	98 mm
Width:	39 mm
Height:	9 mm
Colour:	black