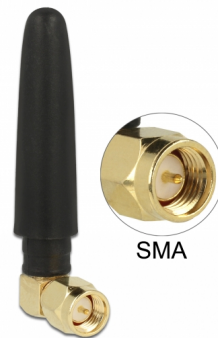


Delock WLAN 802.11 b/g/n-antenn SMA hane 90° 2 dBi rundstrålande med lutningsfog och flexibelt material svart

Beskrivning

Antennen från Delock möjliggör användning av 2,4 GHz-band inomhus. Den är helt kompatibel med Bluetooth, WLAN 2,4 GHz, ZigBee 2,4 GHz, ISM 2,4 GHz.



Artikelnummer 12624

EAN: 4043619126248

Ursprungsland: China

Paket: Zippåse

Specifikationer

- Anslutning: 1 x SMA-hane 90°
- Bluetooth, WLAN 2,4 GHz, ZigBee 2,4 GHz, ISM
- Frekvensområde: 2,4 - 2,5 GHz
- Antennförstärkning: 2 dBi
- Impedans: 50 Ohm
- VSWR: 2,5
- Polarisering: linjär, vertikal
- Drifttemperatur: -40 °C ~ 85 °C
- Höljets material: gummi
- Färg: svart
- Antennlängd: ca 5 cm

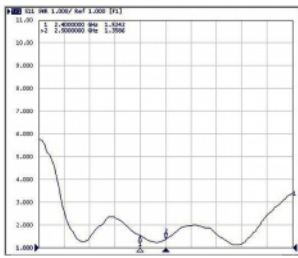
Systemkrav

- Enhet med ett ledig SMA-uttag

Paketets innehåll

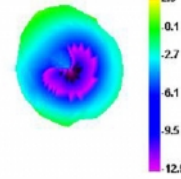
- Antenn

Bilder

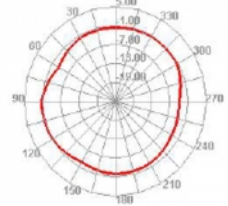


Freq (MHz)	Effi (%)	Effi (dB)	Gain (dBi)	Gain (dBd)
2400	70,99	-1,49	4,17	2,02
2410	69,47	-1,58	3,91	1,76
2420	69,27	-1,59	3,83	1,68
2430	69,19	-1,60	3,67	1,52
2440	68,08	-1,67	3,54	1,39
2450	69,57	-1,58	3,58	1,43
2460	70,66	-1,51	3,56	1,41
2470	71,76	-1,44	3,57	1,42
2480	72,30	-1,41	3,50	1,35
2490	73,39	-1,34	3,56	1,41
2500	73,47	-1,34	3,60	1,45

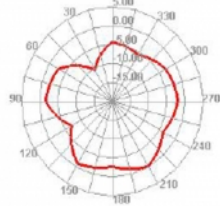
2400.000MHz



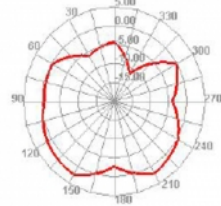
2400.000MHz H



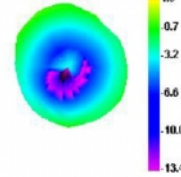
2400.000MHz E1



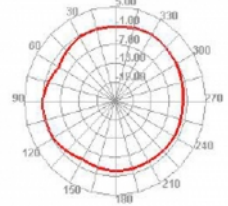
2400.000MHz E2



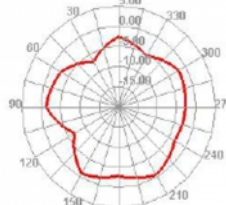
2450.000MHz



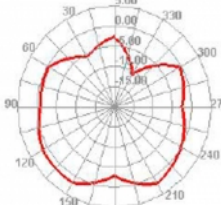
2450.000MHz H



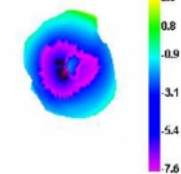
2450.000MHz E1



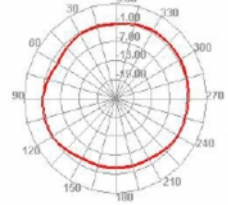
2450.000MHz E2



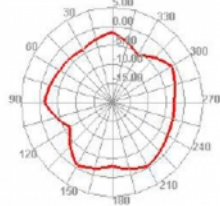
2500.000MHz



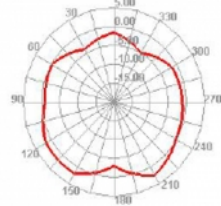
2500.000MHz H



2500.000MHz E1



2500.000MHz E2



General

Suitable for indoor:	Ja
----------------------	----

Technical characteristics

Frequency range:	2,4 - 2,5 GHz
Antenna gain:	2 dBi
Impedans:	50 Ω
Driftstemperatur:	-40 °C ~ 85 °C
Polarisation:	vertikal
VSWR:	2,5

Physical characteristics

Antenna type:	dipol antenna rundstrålande
Hölje färg:	svart
Höljets material:	rubber
Längd:	50 mm