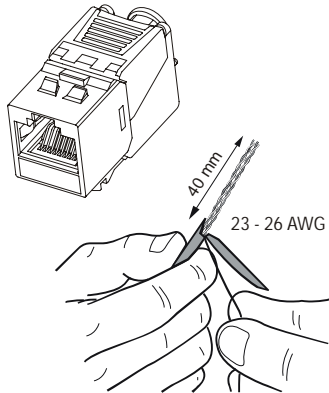


1


Termination instruction:
Can be installed in two options:
Option 1 – tool-free
Option 2 – with Delock 86211 termination tool

Strip approximately 40 mm of the cable jacket.
Cut off the plastic cross and separate the wires into 4 pairs.

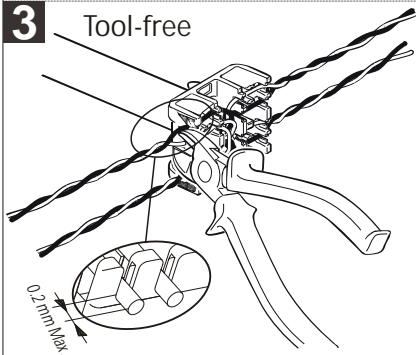
2

Wiring Configurations

	1	2	3	4	5	6	7	8
T568A	White Green	Green	White Orange	Blue	White Blue	Orange	White Brown	Brown
T568B	White Orange	Orange	White Green	Blue	White Blue	Green	White Brown	Brown

3

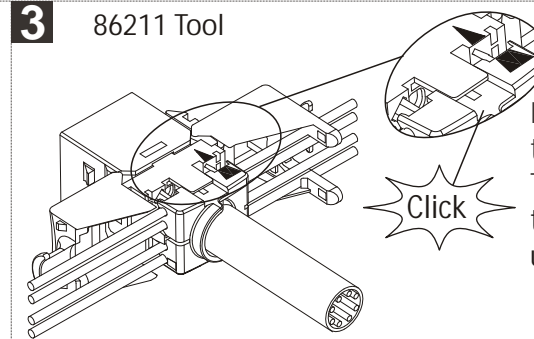
Tool-free



Insert the wires through the cap and seat the wires in the correct slots according to T568A or T568B. Trim the wires flush with the cap. It's recommended that the tip of the wires is no longer than 0.2 mm.

3

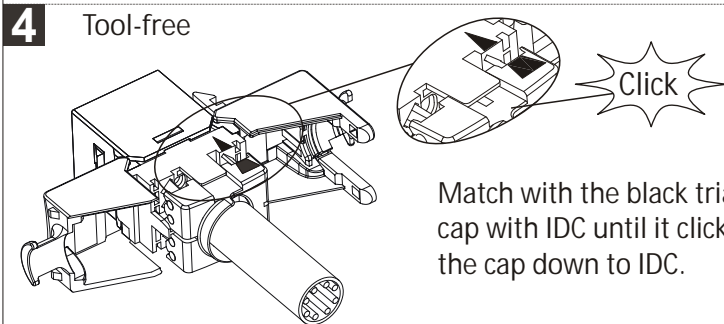
86211 Tool



Insert the wires through the cap and seat the wires in the correct slots according to T568A or T568B. Match with the black triangle and align the cap with IDC until it clicks as shown.

4

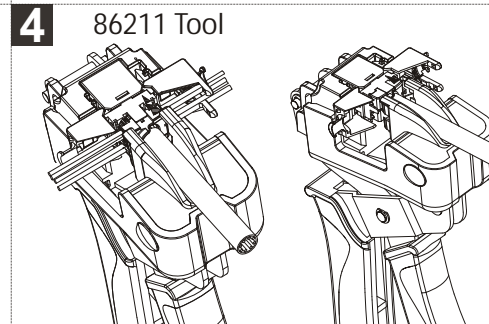
Tool-free



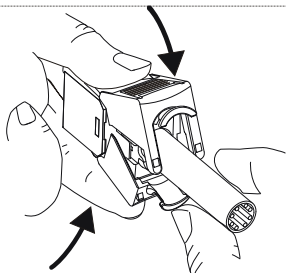
Match with the black triangle and align the cap with IDC until it clicks as shown. Press the cap down to IDC.

4

86211 Tool



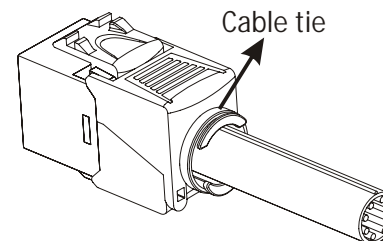
Use the 86211 tool to terminate and cut 4-pairs of wires, simultaneously finishing the installation.

5


Close up the wings towards each other and push down both sides for secure connection.

6

Cable tie



Wrap the drain wire around the shielded holder and tie up the cable.