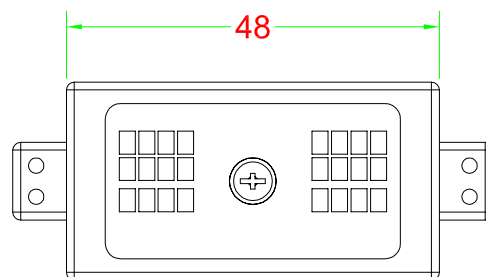
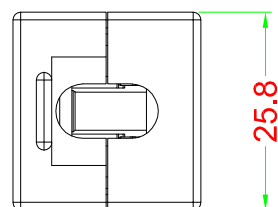
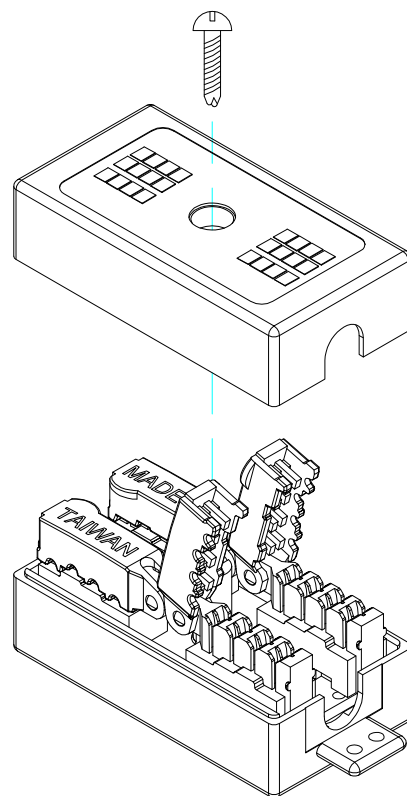
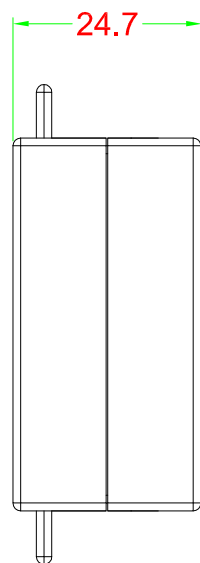


C6 INLINE COUPLER UTP



Performance:

Meets C6 EIA/TIA 568B Standard.

Materials:

Body : Fireproof ABS UL-94V0

PCB : FR-4 / UL-94V0

IDC Cap : Fireproof PC

IDC Body : Fireproof ABS UL-94V0

IDC Pin : Phosphor Bronze & Tinned

IDC Description : For 22-26 AWG.

For 110 or Krone punch-down Tool

Toolless (when use IDC cap directly)

Electrical Specifications:

Insulation Resistance : 500M ohms (min.)

Contact Resistance : 20m ohms (max.)

Current Rating : 1.5 Amps

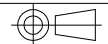
DC Resistance : 0.1 ohms (max.)

Withstanding Voltage : 1000 VAC RMS @ 60Hz / 1 min.

Mechanical Specifications:

IDC Punch Down Cycle : Over 250 cycles

Operation Temperature : -40 °C ~ +70 °C

DRAW NO:			ITEM NO:		
	APPR		CUSTOMER:		
UNIT: m/m	DESIGN		DATE:		
SCALE:	Ref. NO:		TOLERANCE:	· ± 1 · X ± 0.2 · XX ± 0.15	