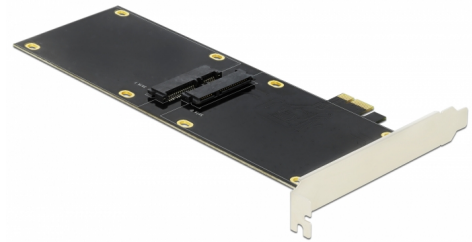


# Delock PCI Express x1 Card for 2 x SATA HDD / SSD

## Description

This PCI Express card by Delock expands the PC by two SATA 22 pin ports. Up to two 2.5" SSD / HDD can be connected to this card. The SSDs / HDDs are mounted single-sided, one after the other on the PCIe card.



**Item no. 90348**

EAN: 4043619903481

Country of origin: China

Package: Retail Box

## Technical details

- Connectors:  
internal:  
1 x PCI Express x1, V2.0  
2 x SATA 22 pin receptacle
- Chipset: Asmedia ASM1061
- Suitable for 2.5" SATA HDD / SSD:  
SATA HDD / SSD up to 6 Gb/s  
supports 5 V HDD / SSD
- Bootable
- Supports Native Command Queuing (NCQ)
- Dimensions (LxWxH): ca. 227 x 120 x 20 mm

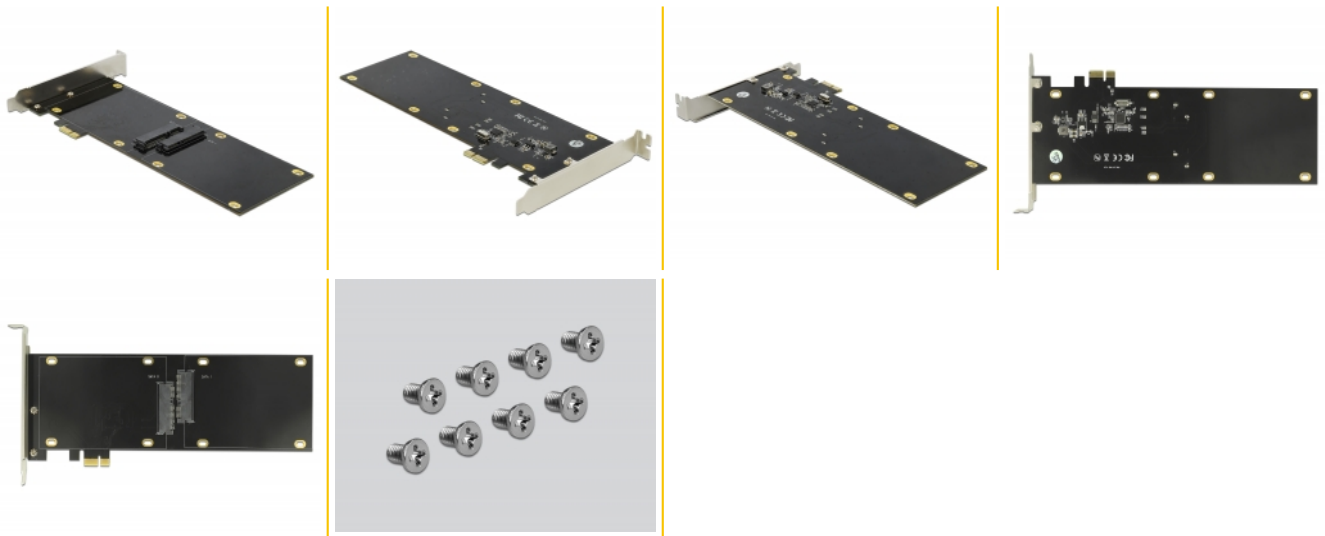
## System requirements

- Linux Kernel 4.9.4 or above
- Windows 7/7-64/8.1/8.1-64/10/10-64
- PC with one free PCI Express slot

## Package content

- PCI Express card
- 8 x fixing screw
- Driver CD
- User manual

## Images



## General

Function:	Plug & Play bootable
Suitable for data medium:	SSD or HDD
Supported operating system:	Linux Kernel 4.9.4 or above Windows 10 32-Bit Windows 10 64-Bit Windows 7 32-Bit Windows 7 64-Bit Windows 8.1 32-Bit Windows 8.1 64-Bit
Slot:	PCIe

## Interface

Internal:	1 x PCI Express x1, V2.0 2 x SATA 22 Pin Buchse
-----------	--

## Technical characteristics

Data transfer rate:	SATA up to 6 Gb/s
---------------------	-------------------

## Physical characteristics

Slot bracket:	standard
---------------	----------