

# Delock GSM / UMTS / LTE Antenna SMA plug 2 dBi fixed omnidirectional with connection cable RG-174 2.5 m outdoor black

## Description

This antenna by Delock allows the usage of different LTE, GSM and UMTS bands indoors and outdoors. It is completely compatible to LTE, GSM, UMTS, ZigBee 902/928 MHz, DECT, Z-Wave 908/921 MHz, NB-IoT.



**Item no. 89613**

EAN: 4043619896134

Country of origin: China

Package: Retail Box

## Technical details

- Connector: 1 x SMA plug
- LTE, GSM, UMTS, Z-Wave 908/921 MHz, ZigBee 902/928 MHz, DECT, NB-IoT
- Frequency range:
  - 900 - 1800 MHz
  - 1900 - 2100 MHz
- Antenna gain: 2 dBi
- Impedance: 50 Ohm
- VSWR: 2.0
- Polarisation: linear
- Operating temperature: -40 °C ~ 85 °C
- Colour: black
- Cable: coaxial
- Cable type: RG-174
- Cable colour: black
- Cable diameter: ca. 2.9 mm
- Cable attenuation: 1.5 dB @ 1.5 GHz per meter
- Smallest bending radius: 10.5 mm
- Cable length incl. connectors: ca. 2.5 m
- Antenna length including magnetic base: ca. 22.0 cm
- Diameter magnetic base: ca. 29.5 mm

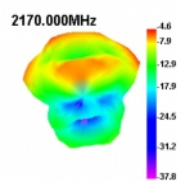
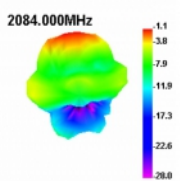
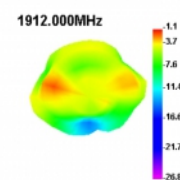
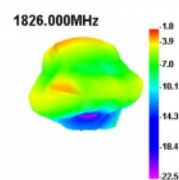
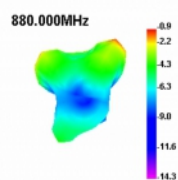
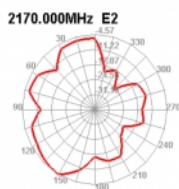
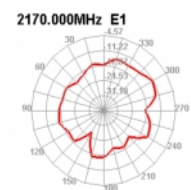
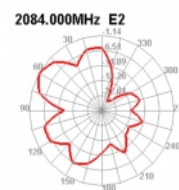
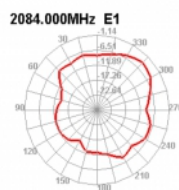
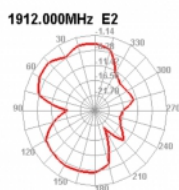
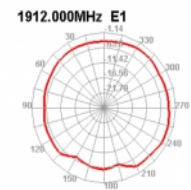
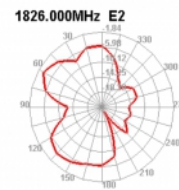
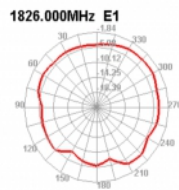
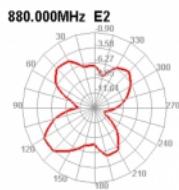
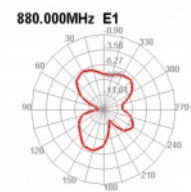
## System requirements

- Device with a free SMA jack

## Package content

- Antenna

## Images



## General

Mounting type:	magnetic
Suitable for outdoor:	yes

## Interface

connector:	1 x SMA plug
------------	--------------

## Technical characteristics

Frequency range:	1900 - 2100 MHz 900 - 1800 MHz
Antenna gain:	2 dBi
Impedance:	50 Ω
Operating temperature:	-40 °C ~ 85 °C
Polarisation:	linear
VSWR:	2.0

## Physical characteristics

Antenna type:	omnidirectional
Antenna length incl. magnetic base:	22.0 cm
Cable category:	coaxial
Cable type:	RG-174
Cable attenuation:	1.5 dB @ 1.5 GHz per meter
Cable colour:	black
Cable length incl. connector:	2.5 m
Smallest bending radius:	10.5 mm
Colour:	black