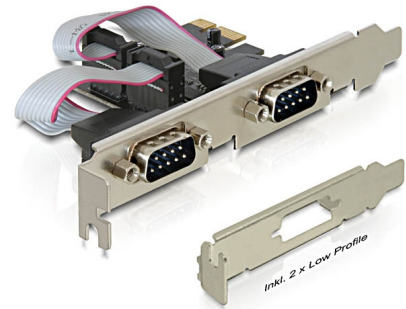


Delock PCI Express Card to 2 x Serial

Description

The PCI Express card by Delock expands a PC by two external serial ports. Different devices such as scanner, printer, mouse etc. can be connected to this card. By using the included low profile brackets, the PCI Express card can be also installed into a Mini-PC.



Item no. 89220

EAN: 4043619892204

Country of origin: China

Package: Retail Box

Technical details

- Connectors:
external: 2 x serial RS-232 DB9 male
internal: 1 x PCI Express x1, V1.1
- Chipset: Oxford
- Data transfer rate up to 230.4 Kbps
- Compatible with 16C950 UART
- FIFO: 128 byte

System requirements

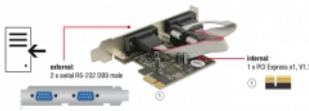
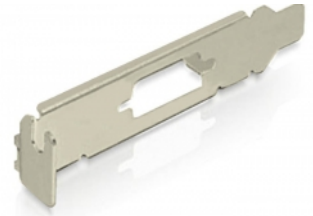
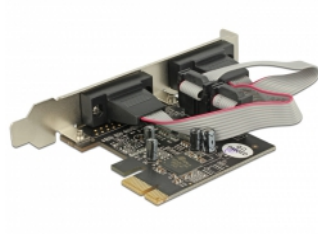
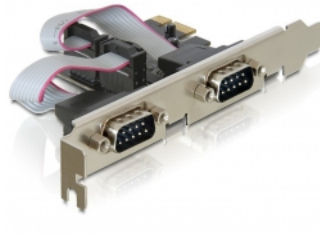
- Windows 7/7-64/8.1/8.1-64/10/10-64
- PC with one free PCI Express slot

Package content

- PCI Express card
- 2 x low profile bracket
- Driver CD

- User manual

Images



General

Form factor:	Low Profile
Specification:	PCIe 1.1
Supported operating system:	Windows 10 32-Bit Windows 10 64-Bit Windows 7 32-Bit Windows 7 64-Bit Windows 8.1 32-Bit Windows 8.1 64-Bit
Slot:	PCIe

Interface

External:	2 x serial RS-232 DB9 plug
Internal:	1 x PCI Express x1, V1.1

Technical characteristics

Chipset:	OXPCIe952
Data transfer rate:	up to 230.4 Kb/s
FIFO:	128 byte
UART:	16C950

Physical characteristics

Pin finishing:	gold-plated
Screw type:	#4-40 UNC
Slot bracket:	Low Profile standard
Depth:	11.1 mm
Width:	65 mm
Height:	59 mm
Colour:	anthracite

