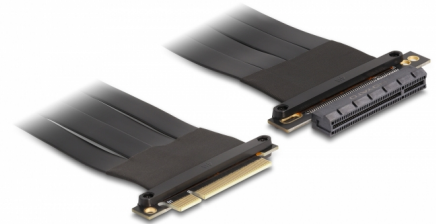


Delock Riser Card PCI Express x8 male to x8 slot with cable 30 cm

Description

This PCI Express riser card by Delock is used to connect a PCI Express x8 card. The flexible cable allows a space-saving installation inside the computer case.



30 cm

Item no. 88029

EAN: 4043619880294

Country of origin: Taiwan,
Republic of China

Package: Box

Technical details

- Connectors:
 - 1 x PCI Express x8 male
 - 1 x PCI Express x8 slot
- Supports PCI Express 3.0 protocol
- Cable gauge: 28 AWG
- Colour: black
- OS independent, no driver installation necessary
- Cable length: ca. 30 cm

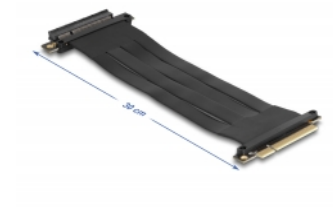
System requirements

- PC with one free PCI Express x8 / x16 / x32 slot

Package content

- PCIe riser card
- User manual

Images



General

Specification:	PCI Express 3.0
Style:	Flat cable

Interface

Connector 1:	1 x PCI Express x8 male
Connector 2:	1 x PCI Express x8 slot

Physical characteristics

Cable length:	30 cm
Colour:	black