

# Delock Mini Docking Station for Macbook with 5K

## Description

This docking station by Delock can be connected to a Macbook with two adjacent **Thunderbolt™ 3** ports, the Macbook Pro. One monitor can be operated at the **HDMI** output or Thunderbolt™ 3 port. One built-in **USB Type-A** port allows the use of peripherals. With a **USB-C™** power supply, laptops such as the Macbook can be charged during operation.

### Mini docking station with Thunderbolt port

The **Thunderbolt™ 3** port can be used to connect e.g. a Thunderbolt™ monitor or further Thunderbolt™ 3 peripherals, which have their own power supply.

### USB Power Delivery (USB PD 3.0) support up to 100 watt

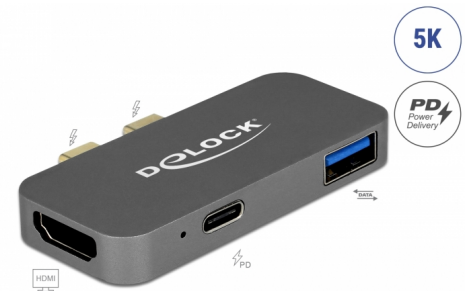
The docking station has a USB Type-C™ Power Delivery port to connect the power supply of the laptop or tablet to charge it. The docking station can also be used without a power supply.

### Small sturdy helper

Due to its **small dimensions** and its **sturdy housing**, this Delock docking station is particularly suitable for travelling. It can simply be packed into the bag together with the laptop and used as needed.

## Note

Only one additional external monitor can be connected to MacBook devices with M1, M2 and M3 chipset. MacBook devices with M1 Pro, M2 Pro, M3 Pro and M3 Max chipset can connect two or more additional external monitors. Further information is available at [www.apple.com](http://www.apple.com).



**Item no. 87739**

EAN: 4043619877393

Country of origin: China

Package: Retail Box

## Technical details

- Connectors:
  - 2 x Thunderbolt™ 3 USB Type-C™ male
  - 1 x HDMI-A female
  - 1 x SuperSpeed USB 10 Gbps (USB 3.1 Gen 2) Type-A female

- 1 x Thunderbolt™ 3 female (no power supply for connected Thunderbolt devices)
- Resolution:
  - Thunderbolt™ 3 up to 5120 x 2880 @ 30 Hz
  - HDMI up to 3840 x 2160 @ 30 Hz
  - (depending on the system and the connected hardware)
- Transmission of audio and video signals
- Only 1 monitor usable with the adapter
- Input power: 1 x USB Type-C™ female max. 100 W
- USB Power Delivery (PD) 2.0
- Metal housing
- Colour: grey
- Dimensions (LxWxH): ca. 65 x 28 x 9 mm

---

## System requirements

- Macbook Pro with two adjacent Thunderbolt™ 3 ports

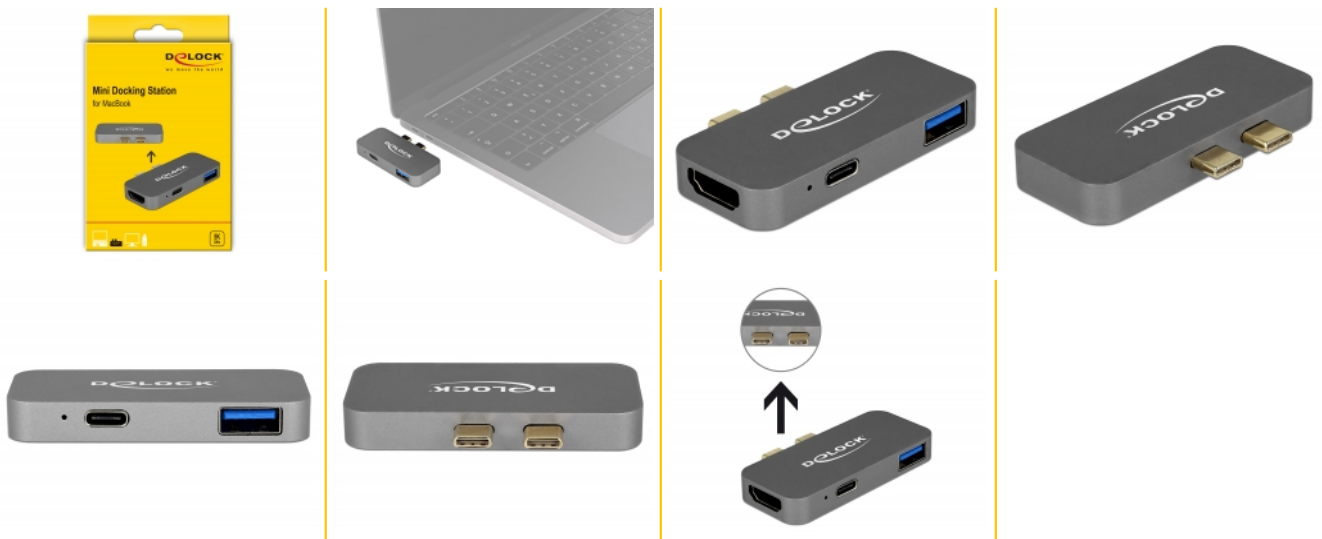
---

## Package content

- Docking station
- User manual

---

## Images



### Interface

|              |   |
|--------------|---|
| Connector 1: | 2 x Thunderbolt™ 3 USB Type-C™ male   |
| Connector 2: | 1 x HDMI-A female   |
| connector 3: | 1 x USB 10 Gbps Type-A female   |
| connector 4: | 1 x Thunderbolt™ 3 female (no power supply for connected Thunderbolt devices) |

### Technical characteristics

|                            |  |
|----------------------------|--|
| Maximum screen resolution: | 3840 x 2160 @ 30 Hz<br>5120 x 2880 @ 30 Hz |
| Voltage:                   | USB Power Delivery (PD) 2.0                |

### Physical characteristics

|                   |       |
|-------------------|-------|
| Housing material: | metal |
| Colour:           | grey  |