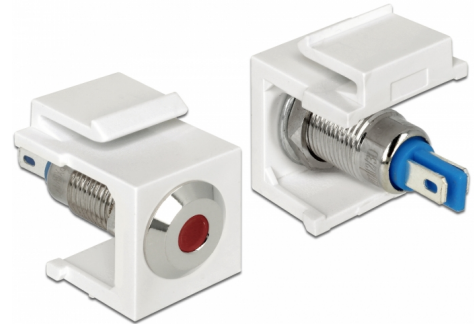


Delock Keystone LED red 6 V flat, white

Description

This Keystone LED by Delock can be installed in e.g. a housing or device, to indicate different operating states.

With its standardised dimensions it can be used for easy snap-in mounting in e.g. a Keystone patch panel, face plate or surface-mount box.



Item no. 86433

EAN: 4043619864331

Country of origin: Taiwan,
Republic of China

Package: Zip poly bag

Technical details

- Connectors:
internal: 2 x solder connection
- Operating voltage / current: 6 V DC / 30 mA
- For Keystone ports with 19.2 x 14.9 mm
- LED colour: red
- Length in front of the panel: ca. 1.5 mm
- Housing colour: white
- Dimensions (LxWxH): ca. 27.3 x 16.3 x 22.3 mm

Package content

- Keystone LED

General

Mounting type:	Keystone module
----------------	-----------------

Interface

Internal:	2 x solder connection
-----------	-----------------------

Technical characteristics

Operating voltage:	6 V DC / 30 mA
--------------------	----------------

Physical characteristics

Housing colour:	white
Length:	27.3 mm
Width:	16.3 mm
Height:	22.3 mm
LED colour:	red