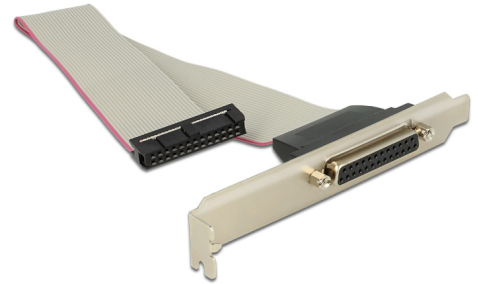


Delock Slot Bracket > 1 x Parallel (without coding)

Description

This Delock slot bracket can be installed into a free slot of your PC and enables you to use an internal parallel port. This can be lead out to connect an external device with parallel port. The 26 pin on the pin header is open so that you can connect this cable to motherboard with 26 pin, e.g. Fujitsu.



25 cm

Item no. 84709

EAN: 4043619847099

Country of origin: China

Package: Zip poly bag

Technical details

- Connector:
external: 1 x Parallel DB25 female
internal: 1 x 25 pin Parallel pin header female (26 pin open)
- Assignment: 1:1
- Slot bracket for installation into a PC slot
- Cable length: ca. 25 cm

System requirements

- PC with a free PC slot
- One free Parallel port internal

Package content

- Slot bracket