

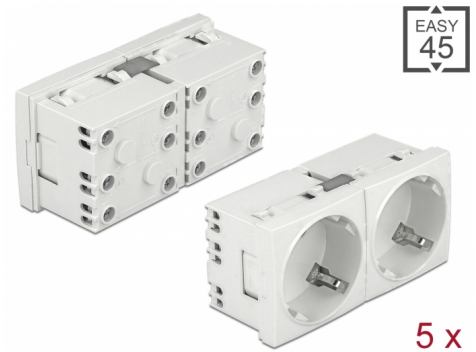
Delock Easy 45 Grounded Power Socket with a 45° arrangement 2-way extendable 45 x 45 mm 5 pieces

Description

This power socket by Delock is designed to provide two CEE 7/3 power connections. The simple snap-in mechanism ensures that the module is firmly in place and can be easily removed if necessary.

Individually extendable

With the help of the optionally available accessories, the socket can be extended by further slots.



Item no. 81325

EAN: 4043619813254

Country of origin: China

Package: Box

Technical details

- Connectors:
 - 2 x socket CEE 7/3
 - 3 x screw terminal for PE, N, L
- Rated current: 16 A / 250 V~
- Rated power: 4000 W
- Sockets in a 45° arrangement
- Material: ABS / PC plastic
- Suitable for module holder Delock Easy 45
- Suitable for 45 mm cable duct with minimum depth 45 mm
- Module size: 90 x 45 mm
- Dimensions (LxWxH): ca. 90 x 45 x 40 mm
- Colour: white

System requirements

- Mains supply with grounding
- Two free module ports Delock Easy 45 (45 x 45 mm)

Package content

- 5 x Power socket 2-way
- User manual

Images



Interface

Connector 1:	2 x 3 Pin Terminalblock Schraubklemme
Connector 2:	2 x Steckdose CEE 7/3 mit Kindersicherung

Physical characteristics

Length:	45 mm
Width:	90 mm
Height:	40 mm
Colour:	RAL 9003 Weiß