

Delock Easy 45 Module Holder with Frame 80 x 80 mm white

Description

This module holder with frame by Delock is used to mount one module with 45 x 45 mm or two modules with 22.5 x 45 mm.

Individual adaptation to the respective needs

Due to the variety of different modules, the module holder can be individually equipped and adapted to the respective needs.

Suitable for 60 mm flush-mounted boxes

The module holder by Delock can be easily mounted on 60 mm flush-mounted or cavity installation box.



Item no. 81300

EAN: 4043619813001

Country of origin: China

Package: Zip poly bag

Technical details

- Robust metal holder with frame
- Suitable for standard installation box
- Module cutout: 45 mm x 45 mm
- Material: ABS
- Dimensions (LxWxH): ca. 80 x 80 x 8 mm
- Colour: white

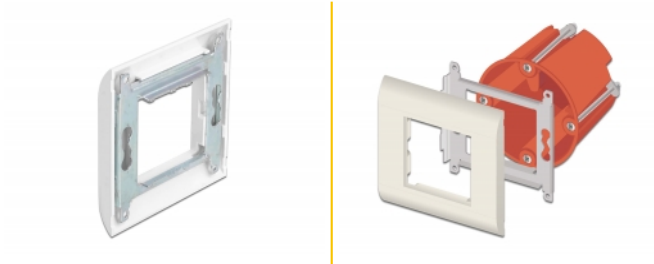
System requirements

- A free standard installation box

Package content

- Module holder with frame

Images



General

Mounting type:	Easy 45
----------------	---------

Physical characteristics

Length:	80 mm
Width:	80 mm
Height:	8 mm
Colour:	RAL 9003 Weiß