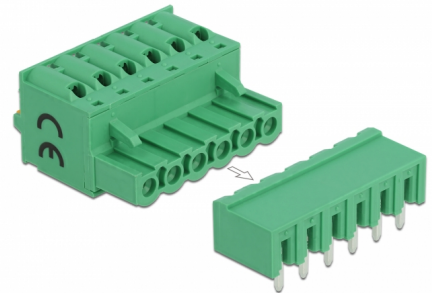


Delock Terminal block set for PCB 6 pin 5.08 mm pitch horizontal

Description

This terminal block set by Delock will be soldered on a PCB board, to create a detachable connection between two components.



Item no. 66507

EAN: 4043619665075

Country of origin: China

Package: Zip poly bag

Technical details

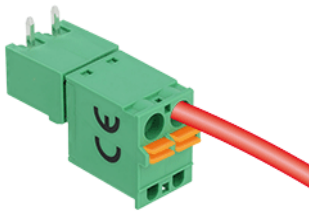
- Connectors:
 - Terminal block:
 - 1 x 6 pin terminal block male
 - 1 x 6 pin terminal block with push button
 - Connection terminal:
 - 1 x 6 pin terminal block female
 - 1 x 6 pin terminal block with soldering pin
- Pitch: 5.08 mm
- Environmental temperature: -40 °C ~ 105 °C
- Useable for a cable gauge range from 28 to 12 AWG
- Material: plastic
- Colour: green
- Dimensions (LxWxH): ca. 31.1 x 25.6 x 15.0 mm

Package content

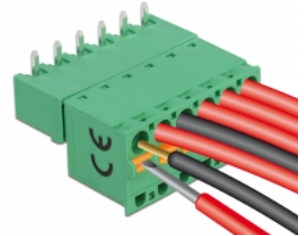
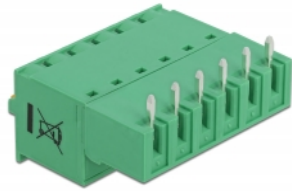
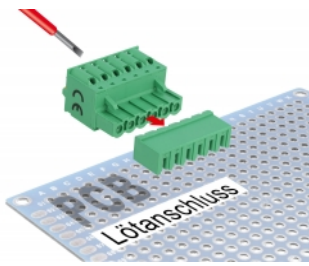
- Terminal block

- Connection terminal

Images



Example



General

Suitable for conductor gauge:	28 - 12 AWG
-------------------------------	-------------

Interface

Connector 1:	1 x 6 pin terminal block male
Connector 2:	1 x 6 pin terminal block with push button
connector 3:	1 x 6 pin terminal block female
connector 4:	1 x 6 pin terminal block with soldering pin

Technical characteristics

Storage temperature:	-40 °C ~ 105 °C
----------------------	-----------------

Physical characteristics

Pitch distance:	5.08 mm
Material:	Plastic
Length:	31.1 mm
Width:	25.6 mm
Height:	15.0 mm
Colour:	green