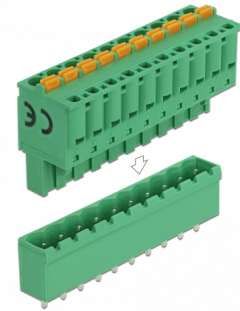


# Delock Terminal block set for PCB 10 pin 5.08 mm pitch vertical

## Description

This terminal block set by Delock will be soldered on a PCB board, to create a detachable connection between two components.



**Item no. 66504**

EAN: 4043619665044

Country of origin: China

Package: Zip poly bag

## Technical details

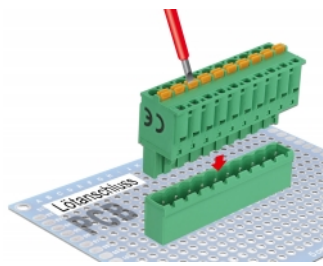
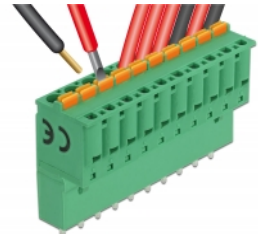
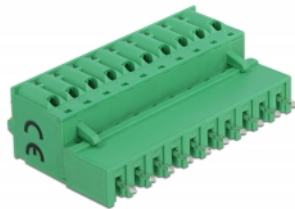
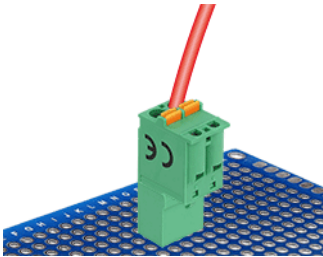
- Connectors:
  - Terminal block:
    - 1 x 10 pin terminal block male
    - 1 x 10 pin terminal block with push button
  - Connection terminal:
    - 1 x 10 pin terminal block female
    - 1 x 10 pin terminal block with soldering pin
- Pitch: 5.08 mm
- Environmental temperature: -40 °C ~ 105 °C
- Useable for a cable gauge range from 28 to 12 AWG
- Material: plastic
- Colour: green
- Dimensions (LxWxH): ca. 51.4 x 25.6 x 15.0 mm

## Package content

- Terminal block

- Connection terminal

## Images



## General

Suitable for conductor gauge:	28 - 12 AWG
-------------------------------	-------------

## Interface

Connector 1:	1 x 10 pin terminal block male
Connector 2:	1 x 10 pin terminal block with push button
connector 3:	1 x 10 pin terminal block female
connector 4:	1 x 10 pin terminal block with soldering pin

## Technical characteristics

Storage temperature:	-40 °C ~ 105 °C
----------------------	-----------------

## Physical characteristics

Pitch distance:	5.08 mm
Material:	Plastic
Length:	51.4 mm
Width:	25.6 mm
Height:	15.0 mm
Colour:	green