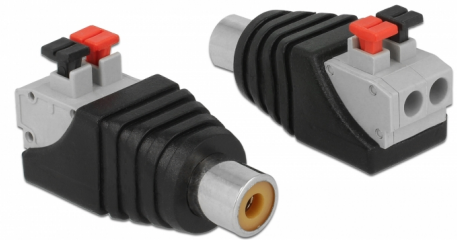


Delock Adapter RCA female > Terminal Block with push button 2 pin

Description

This RCA to Terminal Block adapter is made for special industrial application e.g. for connecting single wires with open cable heads.



Item no. 65565

EAN: 4043619655656

Country of origin: China

Package: Zip poly bag

Technical details

- Connector: RCA female > Terminal Block 2 pin
- Terminal Block screwless
- Pitch 5.0 mm
- Dimensions (LxWxH): ca. 38 x 19 x 15 mm

System requirements

- One free RCA male port

Package content

- Adapter