

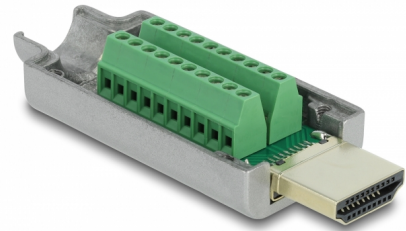
Delock HDMI-A male to Terminal Block with Metal housing

Description

This terminal block adapter by Delock can be used to connect bare wires. The Adapter is suitable for special industrial applications.

Protection by enclosure

The metal housing protects the PCB against dirt and damage.



Item no. 65201

EAN: 4043619652013

Country of origin: China

Package: Zip poly bag

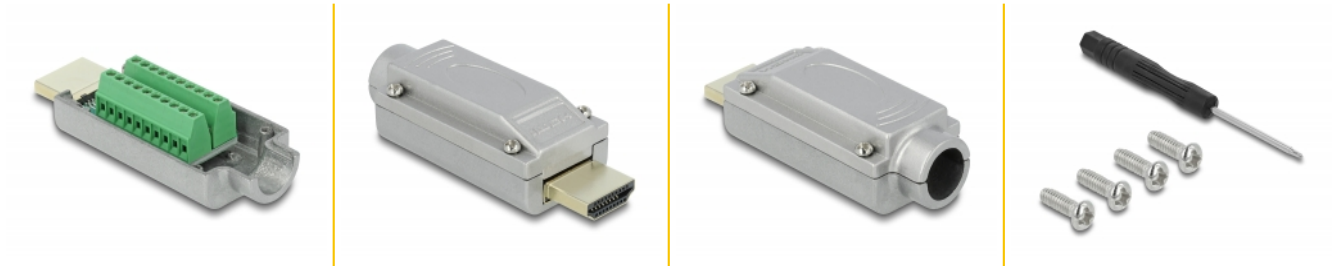
Technical details

- Connectors:
 - 1 x HDMI-A male
 - 1 x 20 pin terminal block
- Pin assignment: 1:1
- Pitch: 2.00 mm
- Useable for a cable gauge from 30 to 24 AWG
- Operating temperature: -15 °C ~ 70 °C
- Dimensions (LxWxH): ca. 61.5 x 23.5 x 16.0 mm

Package content

- Adapter
- 2 x locking screws
- 1 x screwdriver

Images



Interface

Connector 1:	1 x HDMI-A male
Connector 2:	1 x 20 pin terminal block

Technical characteristics

Operating temperature:	-15 °C ~ 70 °C
------------------------	----------------

Physical characteristics

Pitch distance:	2.00 mm
Conductor gauge:	30 - 24 AWG
Length:	61.5 mm
Width:	23.5 mm
Height:	16.0 mm