

# Delock External Dual Enclosure for 2 x 2.5" SATA HDD / SSD with USB Type-C™ female transparent - tool free

## Description

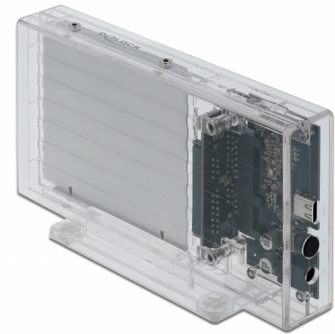
This plastic enclosure by Delock is used for the installation of **two 2.5" SATA hard drives or SSDs**. Despite the slim design, hard disks up to a **height of 9.5 mm** can be installed. The included USB Type-C™ to USB Type-A cable allows the connection to a free USB Type-A female port.

### Transparent enclosure with stand

The **sturdy, transparent plastic housing** provides a view inside to quickly see which memory is inside. A stand is supplied for vertical operation.

### HDD / SSD installation without tools

The special feature of this enclosure is that **no tools** are required to install the HDD. The lid can be pushed backwards by a little pressure, the HDD will be attached to the SATA port and then the lid is reattached until it locks.



**Item no. 42622**

EAN: 4043619426225

Country of origin: China

Package: Retail Box

## Technical details

- Connectors:
  - external:
    - 1 x SuperSpeed USB (USB 3.2 Gen 1) USB Type-C™ female
    - 1 x DC jack
  - internal:
    - 2 x SATA 6 Gb/s 22 pin receptacle
- Suitable for 2.5" SATA HDD / SSD:
  - HDD height up to 9.5 mm
  - SATA HDD / SSD up to 6 Gb/s
  - supports 5 V HDD / SSD
  - HDD / SSD up to 4 TB
- Chipset: JMicron JMS561U
- Data transfer rate:

- SuperSpeed USB 5 Gbps,
  - Hi-Speed 480 Mbps,
  - Full-Speed 12 Mbps,
  - Low-Speed 1.5 Mbps
  - LED indicator for power and access
  - Transparent plastic housing
  - Dimensions (LxWxH): ca. 154 x 82 x 26 mm
  - Hot Swap, Plug & Play
- 

## Power supply specification

- Input: AC 100 ~ 240 V / 50 ~ 60 Hz / 0.4 A
  - Output: 5 V / 2 A
  - Ground outside, plus inside
  - Dimensions:
    - inside:  $\varnothing$  ca. 2.5 mm
    - outside:  $\varnothing$  ca. 5.5 mm
    - length: ca. 10 mm
- 

## System requirements

- Chrome OS 74.0 or above
  - Linux Kernel 3.4 or above
  - Mac OS 10.14.5 or above
  - Windows 7/7-64/8.1/8.1-64/10/10-64
  - PC or laptop with a free USB Type-A port
- 

## Package content

- 2.5" external enclosure
- Cable USB-C™ male to USB Type-A male, length ca. 1 m
- Stand
- Power supply
- User manual

## Images



## General

Function:	Hot Swap Plug & Play
Suitable for data medium:	2.5" SSD or HDD height up to 9.5 mm
Supported operating system:	Chrome OS 74.0 or above Linux Kernel 3.4 or above Mac OS 10.14.5 or above Windows 10 32-Bit Windows 10 64-Bit Windows 7 32-Bit Windows 7 64-Bit Windows 8.1 32-Bit Windows 8.1 64-Bit

## Interface

External:	1 x DC jack 5.5 x 2.5 mm 1 x USB 5 Gbps USB Type-C™ female
Internal:	2 x SATA 22 Pin Buchse

## Technical characteristics

Chipset:	JMicron JMS561
----------	----------------

## Physical characteristics

Housing material:	Plastic
Cable length:	1 m
Length:	154 mm
Width:	82 mm
Height:	26 mm
Colour:	transparent